



FACADE SOLUTIONS

CORIUM

BRICK CLADDING SYSTEM

Mechanically Fixed, A1 Non-combustible,
Natural Clay Brick by Wienerberger

AN OUTHAUS
GROUP COMPANY

OUTHAUS

OHFS 001.09.219



outHaus Facade Solutions offer natural finishes in clay brick and natural stone that can be used both internally and externally. When sourcing systems and products for our catalogue we prioritise quality, durability and reliability coupled with cutting edge design and state of the art concepts. Explore our top of the range collection of systems and products.





WHAT IS CORIUM?

Corium is a unique brick cladding system from outHaus Facades exclusive to the Irish market that combines the natural beauty of genuine clay brick, with the cost-effective fast-track installation of a ventilated rainscreen cladding solution.

A highly effective and easy to use system of corrosive resistant interlocking steel sections (rails) which are designed to allow profiled brick tiles of various dimensions to be mechanically clipped in while maintaining a 10mm mortar joint, the vertical and horizontal joints between the CORIUM brick tiles are then pointed (using a pointing gun) with Parex Historic KL cement free mortar especially developed for use with CORIUM, providing that natural brickwork finish.

Key features:

- **Convenient** – Removes traditional brick and associated onsite logistics from the project's critical path
- **Authentic** – Extruded natural clay brick in a rainscreen cladding solution
- **Aesthetic** – Available in a wide range of colours, textures and sizes, allowing full creative control
- **Rapid Installation** – Saves time and money on site, up to 4 times faster than traditional brickwork
- **Accredited** – Independently tested and certified, BBA, CWCT, EN13501-1, BS8414-2
- **Reliable** – Proven track record in the market for 18+ years
- **Versatile** – Conducive to offsite construction, multiple bond patterns, soffit application

 **CORIUM™**

 **Wienerberger**

BBA 19/5693 covers CORIUM's performance, airtightness and weather resistance along with thermal, acoustic, fire and impact resistance characteristics. Please contact us for your copy.





THE BENIFITS OF CORIUM



01. Strength

- Mechanically fixed
- Impact resistant
- Independently tested (CWCT, BBA, EN13501-1, BS8414-2, BRE135)
- 35+ year design life (per BBA 19/5693)
- A1 non-combustible (EN13501-1)
- Approved for use on buildings over 18 meters
- Manufactured in Germany



02. Speed

- Up to 4 times faster than traditional brickwork
- Not weather dependent
- Fast Enclosure
- Removes brick facade work from the critical path



03. Simplicity

- Supply and fix – approved installers
- Budget estimates of cost and time
- Full technical support/design advice
- Manufactured by the World's largest brick company Wienerberger



04. Creativity

- Architects can bring any design to life using the CORIUM system
- A standard Corium brick tile is 215 x 65mm to match standard Irish brick sizes, but Corium is also available in 50mm, 140mm and 215mm high with brick lengths up to 327mm. Linear Corium brick tiles are available in maximum 50mm x 290mm and 65mm x 327mm
- Brick tiles can be mounted at any angle to achieve truly dynamic finishes – even overhead for soffits and ceilings

HOW IT WORKS

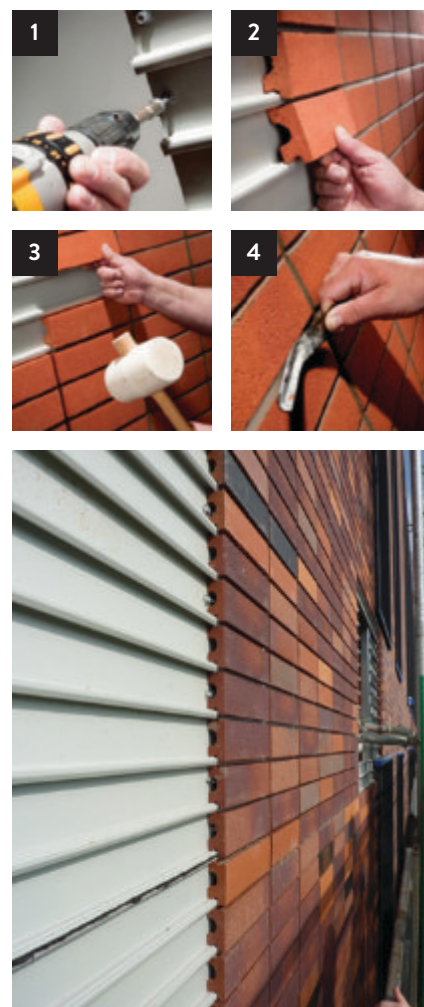
CORIUM is an extruded natural clay brick tile that forms part of a Ventilated Rainscreen facade system. Part of its uniqueness and innovation lies in its ease of use; it comprises a system of interlocking steel sections (carrier rails) that are fixed to a sub-frame. These specifically profiled high corrosive resistant Magnelis® or 304 Stainless Steel rails are designed to allow profiled brick tiles of various dimensions to be mechanically clipped in while maintaining a 10mm horizontal mortar joint, this can be done onsite or in an offsite environment if a unitised solutions is preferred.

Unlike brick slips which rely on adhesives, this mechanical “clipping” feature is unique to CORIUM and ensures a high strength facade whilst enabling some adjustment of tile position during installation. The vertical and horizontal joints between the CORIUM brick tiles are then pointed (using a pointing gun) with Parex Historic KL cement free mortar especially developed for use with CORIUM, providing that natural brickwork finish.

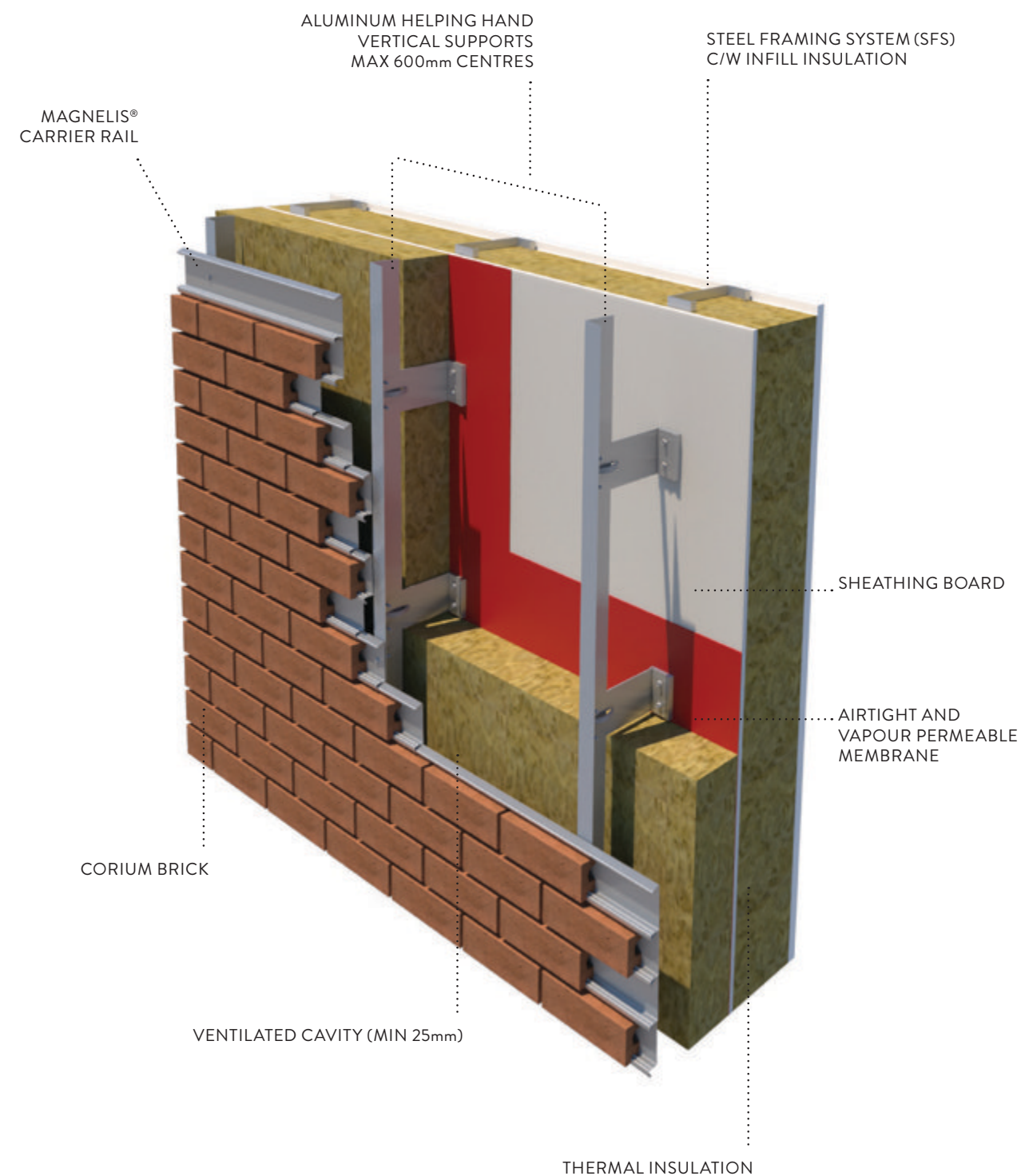
A range of proprietary one piece pistol corners, window reveals, air bricks, soldier brick tiles and soffit brick tiles complement the system. CORIUM is installed by manufacturer trained installers. CORIUM can be installed from mobile platforms, scissor lifts, mast climbers or traditional scaffolding.

An extensive range of colours and textures are available that has been designed to blend with or complement most new build or refurbishment projects, CORIUM also provides specifiers with a host of options including glazed finishes and larger brick tile formats. As CORIUM is predominantly a dry design system its easy installation and associated onsite logistics is four times faster than traditional brickwork, saving time and money on site.

CORIUM and the CORIUM Rail carries the highest fire rating per EN13501-1, A1 Non-Combustible. CORIUM is convenient and reliable and thanks to its industry accreditation such as CWCT, BRE135, BS8414-1, EN13501-1 and BBA Certification, specifiers can be certain of its durability and strength.



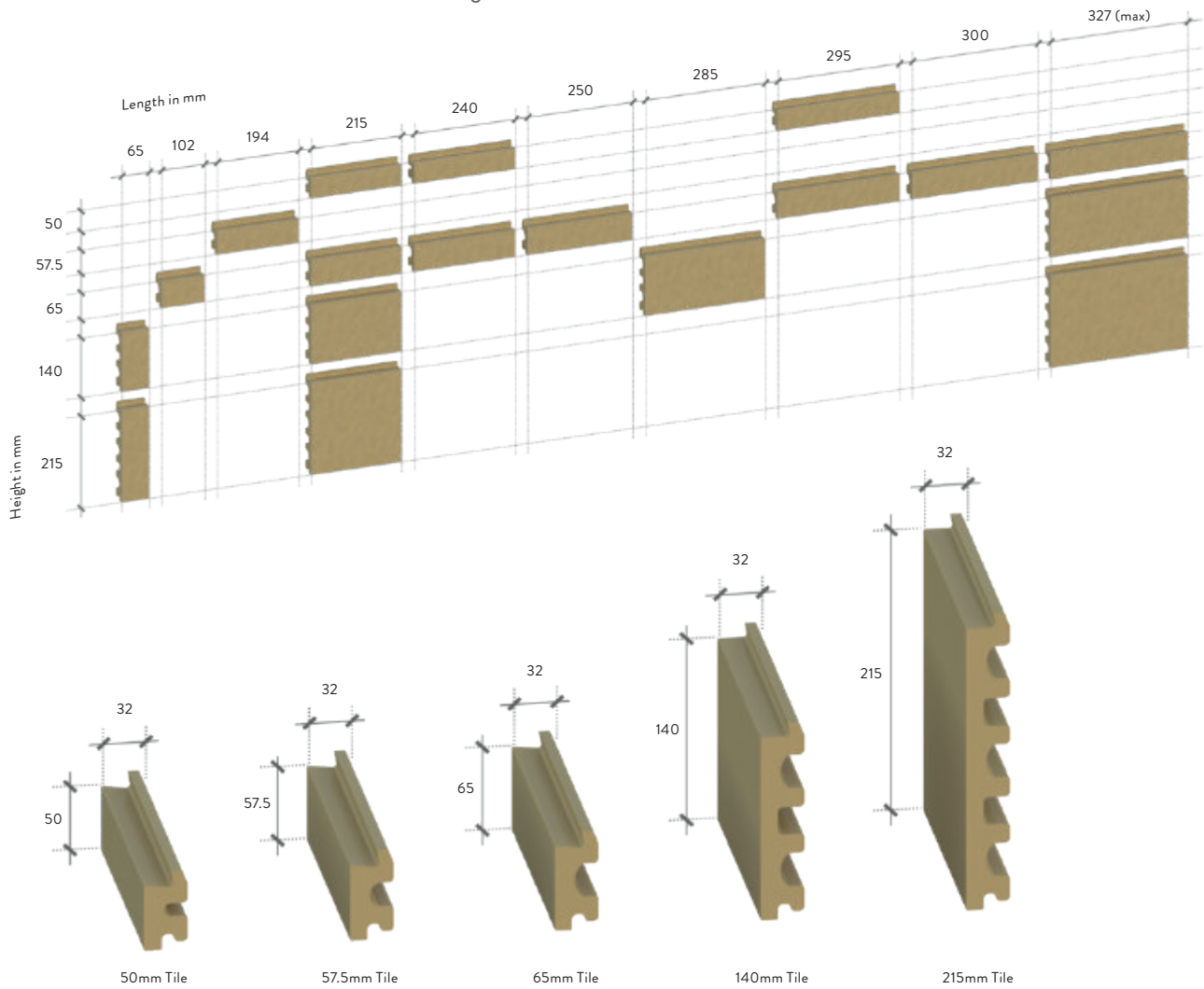
DETAIL OF CORIUM SYSTEM USING STEEL FRAMING SYSTEM (SFS)



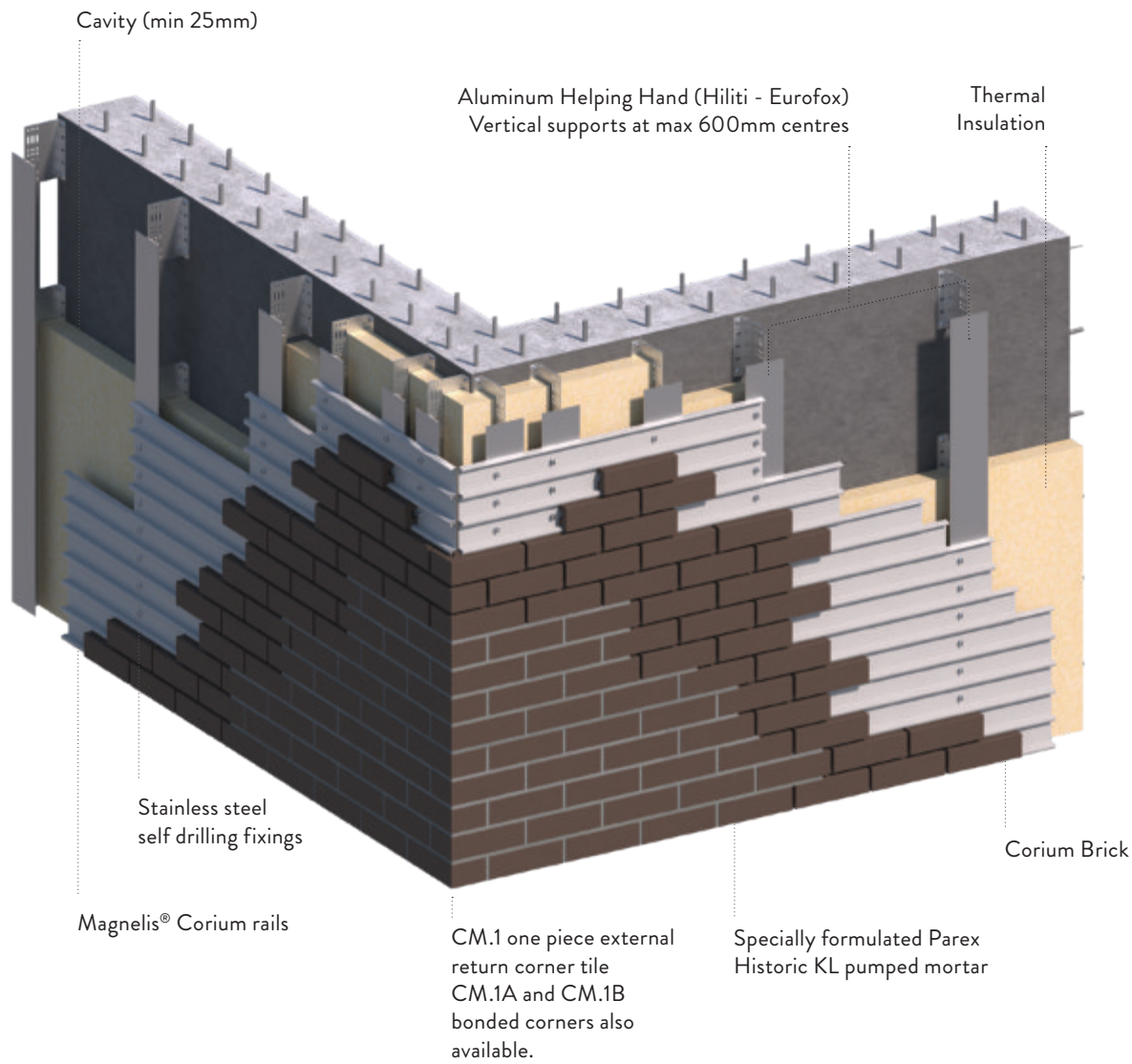
THE OPTIONS

SIZE OPTIONS

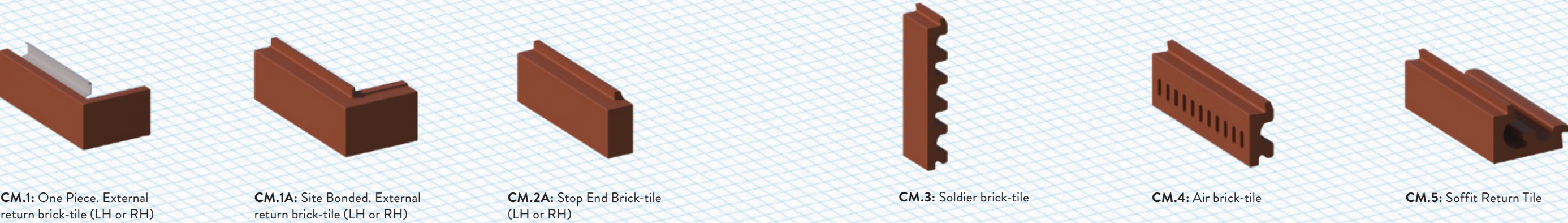
The grid below shows tile sizes that have been previously made. There is flexibility in tile length between 215 and 327mm. The maximum possible tile length is 327mm but for 50mm tiles it is 295mm. In the near future there will also be a 92mm high tile available.



DETAIL OF CORIUM SYSTEM ON A REINFORCED CONCRETE STRUCTURE



ADDITIONAL COMPONENTS



CORIUM CASE STUDY BELMONT HOUSE

Client _____ Aviva Life & Pensions
Architect _____ TP Bennett
Main Contractor _____ McLaren
Installer _____ FK Construction

A bespoke four colour blend of tiles was used to modernise what was originally a 1980's office block. 2500m² of CORIUM brick facade was used in the project.



CORIUM CASE STUDY CHELMSFORD CENTRAL



Client Genesis Housing Association
Architect Pollard Thomas Edwards PTE
Main Contractor Bouygues UK
Installer Conneely Facades

The west end of Chelmsford has seen public squares, heritage buildings, commercial spaces and residential units refurbished and redeveloped using almost 9000m² of the CORIUM brick. CORIUM was ideal for the project as it can be installed in both vertical and horizontal orientations, achieving a facade that could not be achieved using a standard facing brick.



CORIUM CASE STUDY PAXTON SCHOOL

Client _____ The Mayor & Burgesses of the
London Borough of Lambeth
Architect _____ Paul Murphy Architects
Main Contractor _____ Extraspace Solutions (UK) Ltd
Installer _____ Extraspace Solutions (UK) Ltd

The use of CORIUM allowed Paxton School (1) to stay open and fully operational throughout the 6 month construction period. Using a simple palette of colours helped maintain continuity throughout the site. A protruding brick facade design feature was created using non-standard double-thick CORIUM tiles (2).





EXPLORE OUR CORIUM LIBRARY



CORIUM 10100



CORIUM 12000



CORIUM 12200



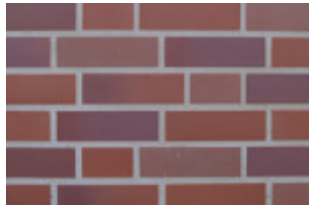
CORIUM 12280



CORIUM 12284



CORIUM 13000



CORIUM 13001



CORIUM 13002



CORIUM 13003



CORIUM 13010



CORIUM 13302



CORIUM 13332



CORIUM 13335



CORIUM 13342_13372



CORIUM 13352



CORIUM 13362



CORIUM 13392



CORIUM 13560



CORIUM 14050



CORIUM 14090



CORIUM 14091



CORIUM 14191



CORIUM 14193



CORIUM 14590



CORIUM 15600



CORIUM 15601



CORIUM 15611



CORIUM 15630



CORIUM 15653



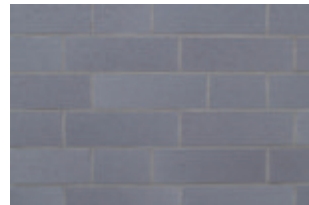
CORIUM 15603



CORIUM 15610+133



CORIUM 17303



CORIUM 22000 with 13302+270



CORIUM 22011



CORIUM 22012



CORIUM 22013



CORIUM 2321-70



CORIUM 23500



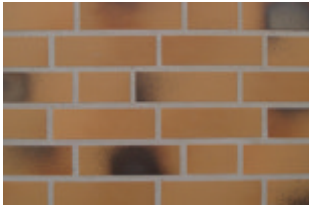
CORIUM 23511



CORIUM 250(2907)



CORIUM 25600



CORIUM 2601+29270



CORIUM 2615 with 13302+29270



CORIUM 2706+2903+AMM16X



CORIUM 29000



CORIUM 29001



CORIUM 29013



CORIUM 2902+270+AMN16X



CORIUM 2902-70



CORIUM 29505



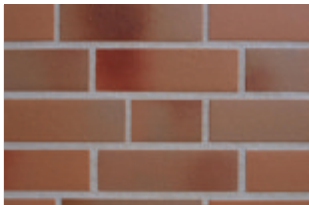
CORIUM 29110



CORIUM 29180



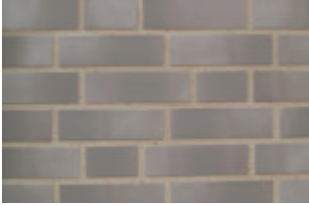
CORIUM 29270



CORIUM 29270-8 with 133+240



CORIUM 52010



CORIUM 60003



CORIUM 60053



CORIUM 61070



CORIUM 63000



CORIUM 71010



CORIUM 73010



CORIUM 73110



CORIUM 73210



CORIUM 73310



CORIUM 74010



CORIUM 74110



CORIUM 33201



CORIUM 30205



CORIUM 33206



CORIUM 33207



CORIUM 35500



CORIUM 42010



CORIUM 74117



CORIUM 74210



CORIUM 74310



CORIUM 75010



CORIUM 75075



CORIUM 75110



CORIUM 86000



CORIUM 86305



CORIUM 92100



CORIUM 92110



CORIUM 92800



CORIUM 92905



CORIUM 92960



CORIUM 93700



CORIUM 93750



CORIUM 93770



CORIUM 93790



CORIUM 93800



CORIUM 93801



CORIUM 93807



CORIUM 93808



CORIUM 93811



CORIUM 93816



CORIUM 92900



CORIUM 93870



CORIUM 93880



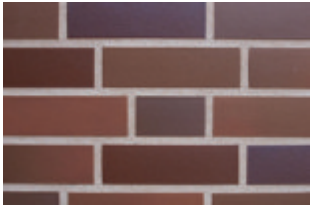
CORIUM 94100+93800



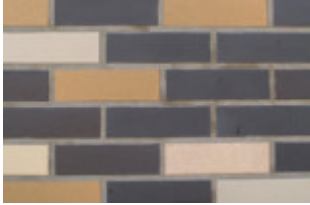
CORIUM 94180



CORIUM 94184



CORIUM 94186



CORIUM
Grandville Dark Hand Blend



CORIUM
Grandville Light Hand Blend



CORIUM 94186

To find out more, visit www.outhaus.ie



OUTHAUS

Unit 26, Airways
Industrial Estate, Santry,
Dublin 17, D17 TH93.

Tel: (01) 844 1200

info@outhaus.ie

www.outhaus.ie/corium

ASK FOR OUR FACADES TEAM

